

DMAP

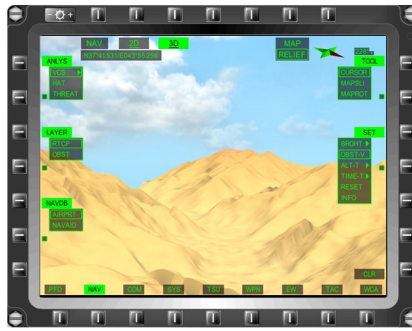
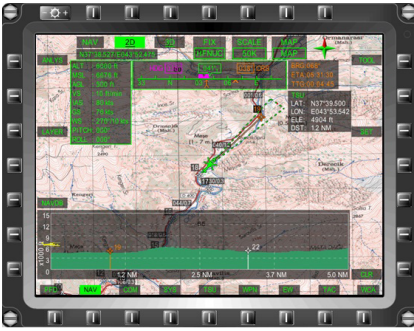
DIGITAL MOVING MAP

2D & 3D
MAP GENERATION

HIGH END
PROCESSOR

1600x1200
HIGH RESOLUTION MAP





DMAP

DIGITAL MOVING MAP

Digital Moving Map (DMAP) generates digital real-time moving map and gives the ability to pilot and co-pilot to perform the mission effectively. DMAP can meet the requirements of different applications with the help of high processing power, high resolution map image and its storage capacity.

DMAP's reliable and rugged design together with advanced cooling and thermal management techniques enables DMAP to operate in harsh environmental conditions for fixed and rotary wing aircrafts.

DMAP's scalable design gives the flexibility to meet the future needs, such as higher performance and additional interfaces.

Software Specifications

General

- Maps in 7 scales (1/25K - 1/2M)
- Vertical Cross Section (VCS) Analysis
- Height Above Terrain (HAT) Analysis
- Line Of Sight (LOS) Analysis
- THREAT Analysis
- Point of Interest (POI) Search
- Terrain/Obstacle Awareness Function
- User Interface with Cursor or Bezels
- Turkish/English Language Selection

Map Display Features

- Database including Satellite Photos, Vector and Raster Data
- 2D Map Mode and 3D Map Display with DTED-2
- Representation of Tactical (VMF, Image support) and Navigational Data (JEPPESEN/DAFIF Support) contained in the Database
- Platform Data (Speed, Altitude, etc.) Display
- Two independent Display Channels

Hardware Specifications

General

- PBIT/IBIT/CBIT
- 28V DC Power Supply
- Power Consumption < 200 W
- 64 GB Solid State Mass Memory

Electrical Interfaces

- 2 x MIL-STD-1553Bus Interface
- 2 x RS-232 Full-Duplex Channels
- 4 x RS-422 Full-Duplex Channels
- 2 x 10/100 Mbit Ethernet Interface
- 8 x GND/OPEN Discrete Input
- 2 x SHORT/OPEN Discrete Input
- 5 x SHORT/OPEN Discrete Output

Analog Video Interface

- NTSC/PAL/RGBHV
- 4 x Analog Video Outputs in Composite Format
- 2 x Analog Video Outputs in RGB HV Format
- 2 x Analog Video Inputs

Digital Video Interface

- 2 x DVI Video Output Groups, Each of which consists of 2 DVI outputs with the same video information

Zeroize Control

- Erase of Stored MAP Database

Qualifications

- MIL-STD-810
- MIL-STD-461
- MIL-STD-704

Physical Specifications

- Dimensions: 220mm(H) x 180mm (W) x 450mm (D)
- Weight: < 11kg including mounting tray

