

GUNGOR-LR

LONG RANGE DAYLIGHT
CAMERA

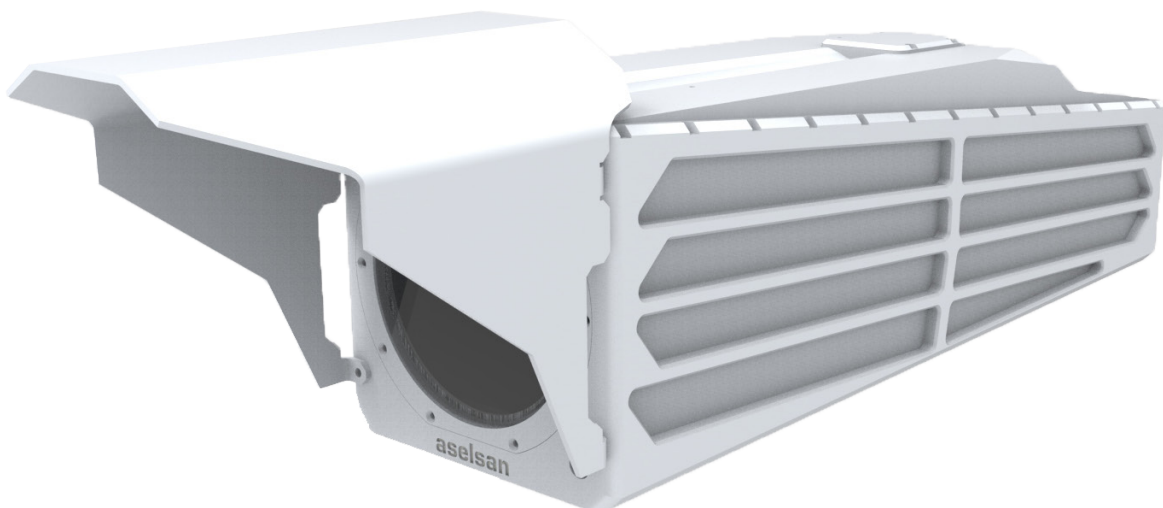
COMPATIBLE MODULAR SYSTEMS

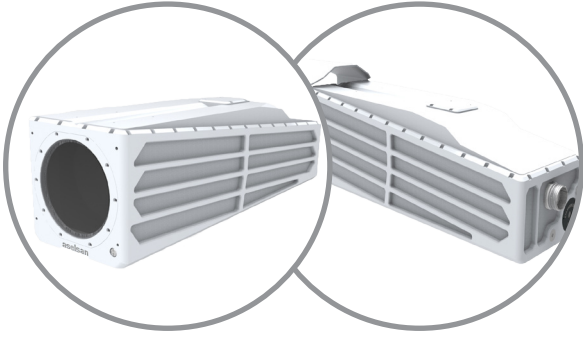
DURABLE AND COMPACT

LONG RANGE DETECTION/RECOGNITION/IDENTIFICATION

CONTINUOUS 60X OPTICAL ZOOM

ADAPTIVE FOG REDUCTION





GUNGOR-LR

LONG RANGE DAYLIGHT CAMERA

Applications

- Long Range Surveillance
- Border Surveillance
- Situational Awareness
- Coastal Surveillance
- Facility Security
- Law Enforcement

Main features

- Continuous Optical Zoom
- Digital 10x Zoom
- Daylight Surveillance
- Automatic & Manual Contrast/Brightness Adjustment
- Suitable for Integrated System Architecture
- Built in Test
- Upon Tripod & Pan Tilt Operation
- Built specifically for Commercial and Military Surveillance and Reconnaissance

Environmental Conditions

- Operating Temperature : -20°C , +45°C

Technical Specifications

- Resolution : 560 TV Lines, 440K Pixels
- F-number : F3.8-F3000
- Sensor : 1/2" CCD
- FOV (Wide) : 28.7°x 21.7°
- FOV (Tele) : 0.5°x 0.36°
- Optical Zoom : 60X (continuous)
- Digital Zoom : 10X
- Video Output : Composite
- Remote Command/Control : RS 422
- Feed Voltage : 28Vdc